

EASTERN METALLIZING CO (P) LTD

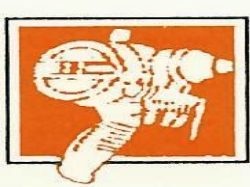
SURFACE ENGINEERED

COMPONENTS FOR

ROD MILLS

&

WIRE & CABLE INDUSTRY



EASTERN METALLIZING CO (P) LTD

MANUFACTURING OF SURFACE ENGINEERED COMPONENTS

•MECHANICAL DESCALERS

•OVERHEAD PULLEYS & WIRE GUIDES

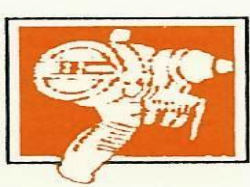
•ROLLERS AND SEPARATOR PINS

•CAPSTANS

•CONE RINGS

•STEP CONE ASSEMBLIES FOR WET WIRE DRAWING

•TABLE ROLLERS FOR ROD, BAR & PIPE MILLS



EASTERN METALLIZING CO (P) LTD

SURFACE ENGINEERING USING

•TUNGSTEN CARBIDES

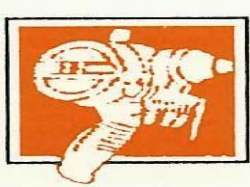
•CERAMICS – ALUMINA, CHROME OXIDES, ZIRCONIA

•CERMETS (CERAMIC – METALLIC)

•SUPER ALLOY – AMORPHOUS COATINGS

•LOW CO-EFFICIENT OF FRICTION COATINGS

•SUPER FINISHING FOR BEST SURFACE FINISHES



EASTERN METALLIZING CO (P) LTD

OUR SURFACE ENGINEERED PRODUCT ADVANTAGES

- HIGH PRECISION ENGINEERED PRODUCTS TO MATCH STRICT DIMENSIONAL TOLERANCES**
- EXTREMELY HARD, WEAR AND ABRASIVE RESISTANT SURFACES**
- VERY LOW WEAR RATES**
- HIGHER PASS LIFE – LOWER REPLACEMENT COST**
- LOWER DOWNTIME AND MAINTENANCE COSTS**
- SUPERIOR END PRODUCT QUALITY**
- VERY LOW COSTS AS COMPARED TO SOLID T.C. / D2 / CERAMIC PARTS**

EMC Manufactured "Surface Engineered Step Cone assemblies" used in Wet Wire Drawing machines as a replacement for SOLID T.C. / D2/ Ceramic Step Cone Assemblies



Engineered surface with surface finish of 0.4 microns Ra. Body of EN-8 grade material

Benefits

Is custom made as per your design and requirement

Any size cone / cone ring can be manufactured as per your requirement

Fraction of a cost as compared to SOLID T.C., D2, CERAMIC Cones / Cone rings

More abrasion and wear resistance as compared to SOLID T.C. due to the coating matrix formed during thermal spray coating

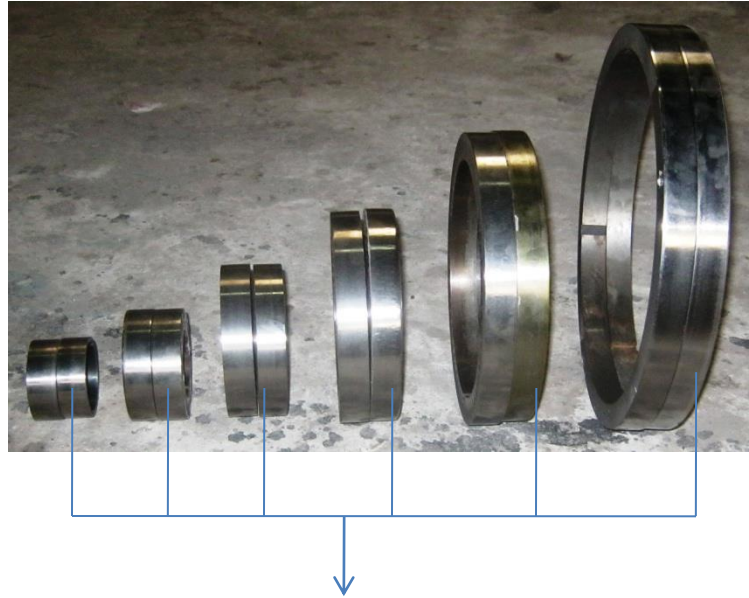
Can be supplied in small lots

Quick delivery eliminating the need of inventory build up at your unit

Cone body made of EN-8 Material. Avoids brittleness and reduces chances of breakage during fitment / human error

Factory Photos of our manufactured "Surface Engineered" wet wire drawing cones / cone rings

EMC Manufactured "Surface Engineered Cone Rings as a replacement for SOLID T.C. / D2/ Ceramic Cone rings



Engineered surface with suitable alloys / WC / Ceramic for different wires – Ferrous & Non-ferrous

Surface finish of 0.4 microns Ra.

Fabricated using suitable EN grade material.

Benefits

Is custom made as per your design and requirement

Any size cone ring can be manufactured as per your requirement

Fraction of a cost as compared to SOLID T.C., D2, CERAMIC Cone rings

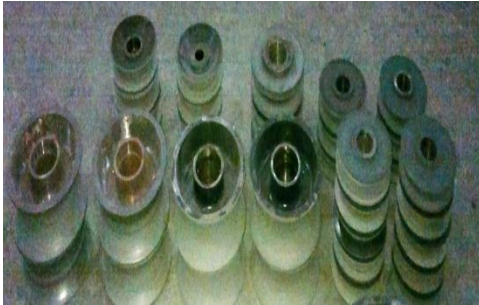
Extreme abrasion and wear resistant due to engineered surface

Can be supplied in small lots

Quick delivery eliminating the need of inventory build up at your unit

Cone Ring made of EN grade Material. Avoids brittleness and reduces chances of breakage during fitment / human error

EMC Manufactured “Surface Engineered Components as a replacement for SOLID T.C. / D2/ Ceramic parts



Wire Guide Pulleys



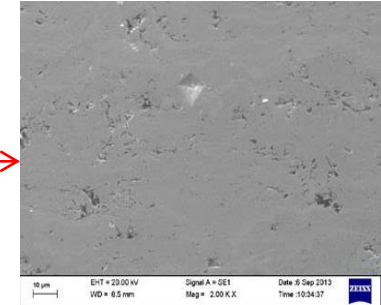
Rollers, Pins,



Dancer Rollers



Pulley (top view)



Engineered surface micro-structure

Engineered surface with suitable alloys / WC / Ceramic for different wires – Ferrous & Non-ferrous

Surface finish from 5 microns - 0.4 microns Ra or lower as required

Fabricated using suitable EN grade material.

Benefits

Is custom made as per your design and requirement

Fraction of a cost as compared to SOLID T.C., D2, CERAMIC parts

Extreme abrasion and wear resistant due to engineered surface

Quick delivery eliminating the need of inventory build up at your unit

Surface Engineered “TABLE ROLLS” for ROD, PIPE & BAR mills

Benefits

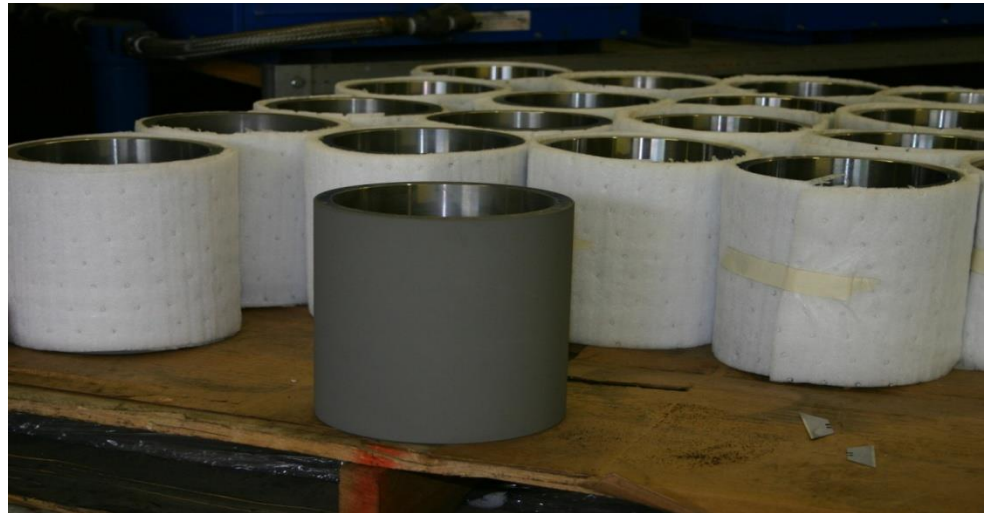
Manufactured using CNC machines as per your drawing and specification within close dimensional tolerances of Key way etc

Hard, Abrasion resistant *engineered surface* leads to 5x pass life of rolls

Avoids formation of grooves, resulting in better end product

Fraction of a cost as compared to solid T.C. rolls

“Surface Engineering” sourced from our technical partners – ASB Industries Inc based in OHIO, USA



Repairing by Surface Engineering on used drawing mill components

Benefits

Surface engineering imparts superior characteristics as compared to parent material

Increases pass life and production and line speeds

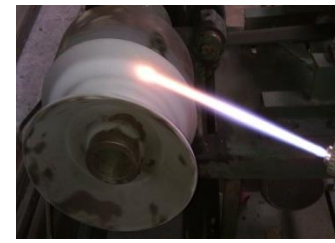
Improves end product quality

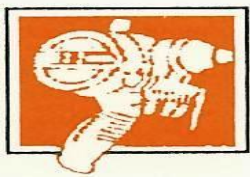
Reduces “seconds” and “rejects”

Materials processed in a fraction of a time as compared to procurement of new components

Same part is re-used after surface engineering making it very cost effective

Surface engineering solutions are tailor made depending on Type of product, wire diameter, lubrication, line speed, type of machine etc





EASTERN METALLIZING CO (P) LTD

CONTACT US AT

WORKS:

OM INDUSTRIAL COMPLEX,
RAMKRISHNA BATI
MONBER,
P.O: MRIGALA, P.S: DANKUNI,
HOOGLY – 712311, WEST BENGAL, INDIA
PH: + 91 33 3212 – 230509 / 22
EMAIL: SALES@EMCPL.IN

OFFICE:

2 INDIA EXCHANGE PLACE, 1ST FLOOR,
KOLKATA-700001, WEST BENGAL, INDIA
PH: + 91 33 22304759 / 2842 / 32572003
FAX: + 91 33 2231 4164
EMAILS: SALES@EMCPL.IN

